

AADE Overview for Leaders

You are an important part of AADE!

Welcome to the AADE Leadership! To help you have a successful tenure, AADE prepared this slide deck to give you a handy reference to the organization. Refer back to it, share it, use it! Inside ...

- What defines AADE? *Our Vision, Mission, Values, Strategic Goals*
- How we work. *Our governing structure & organizational infrastructure*
- How we serve.
- Facts that help tell the AADE story & help spread the word.

Let's take a look ...

What defines AADE?

Our [Vision](#) is optimal health and wellness for all people with diabetes and related chronic conditions.

To make that possible, Our [Mission](#) is:
Driving practice to promote healthy living through self-management of diabetes and related chronic conditions.

What defines AADE?

We are a **multidisciplinary association of healthcare professionals** whose [purpose](#) is dedicated to **integrating self-management as a key outcome in the care of people with diabetes and related chronic conditions.**

Healthcare professionals who share
our vision, mission and dedication can join AADE!

What defines AADE?

We live by **five Values** ...

- Leadership – **We champion effective leadership** in our organization and in the field by setting the direction and the scope of diabetes education, developing evidence-based guidelines and promoting outcomes-driven care.
- Integrity – **We respect our members, and the individuals they serve.** We adhere to the highest ethical principles and shares a commitment to excellence.
- Diversity – **We are committed to cultural and professional diversity** and strive to be an inclusive and collaborative organization.
- Innovation – **We value and promote creativity and flexibility** when approaching projects, meeting challenges and overcoming barriers.
- Customer Service – **We place the needs of the diabetes educator at the center** of our products, programs and activities.

What defines AADE?

Our [Strategic Goals](#) are our road map to assure AADE achieves its mission that drives our vision. We follow a continual planning process to set and update our goals. In 2012, these include:

Public Affairs

Self-management is central to quality diabetes care and prevention. AADE advocates for policies that improve access to self-management education by collaborating with key stakeholders in the healthcare community.

Practice and Research

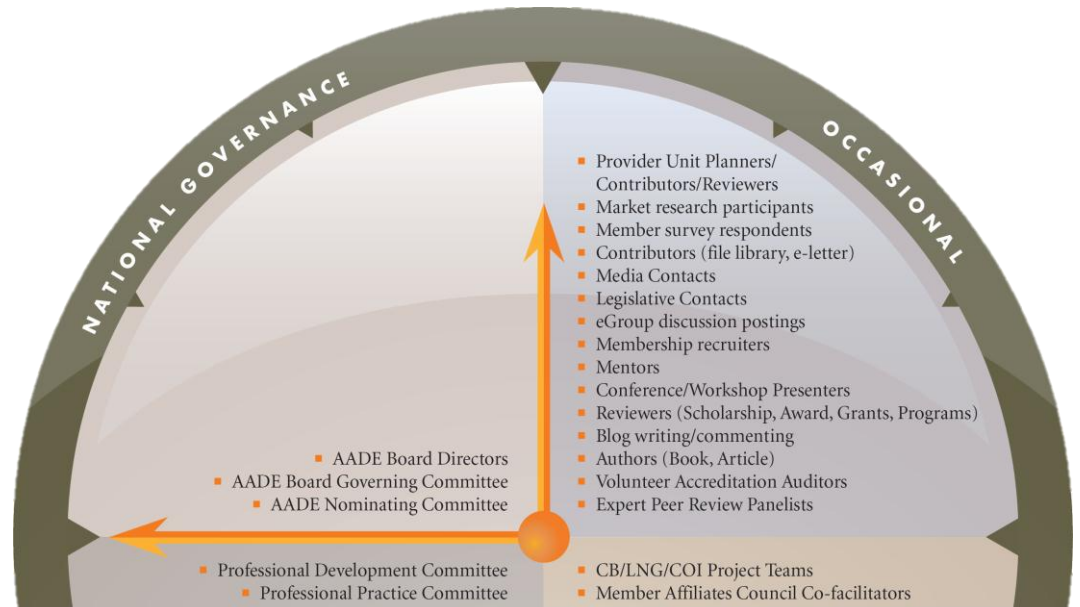
The practice of diabetes self-management is evidence-based and outcomes-driven. AADE sets the scope and direction for self-management education.

Membership

AADE is the key to professional success. AADE provides opportunities and resources to advance skills and career goals and offers its members a vibrant, supportive network.

How We Work

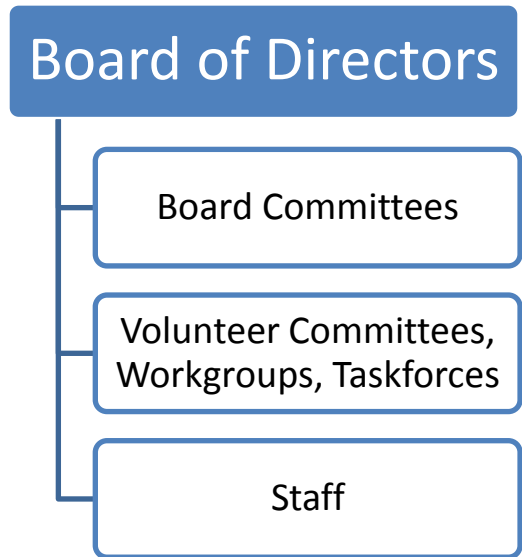
As a Volunteer, you are part of a vibrant group of AADE Members serving diabetes educators through your role within AADE.



How We Work

Our volunteer pool is lead by a national [Board of Directors](#) who work in concert with [technical and advisory committees](#) and a host of members serving in LNG, CB, COI, task force and ad hoc roles.

Supporting all volunteers is a dedicated [staff](#) headquartered in Chicago, IL.



How We Work

Everything we do is guided by our key documents. We ask all volunteers to be aware of, familiar with and follow these guidelines so we can operate in one strong voice. You should have already been asked to complete your pledge to do so.

- [Bylaws](#) – our rules for internal organization and governance.
- Policy and Procedures – assure AADE makes consistent and logical decisions.
- [Strategic Plan](#) – our vision of your organization's future and the basic steps to achieve this.
- [Code of Ethics](#) – This code represents the values of the profession and provides guidance for the behavior of its members.

How We Serve

We serve our members – and the clients they serve – in a [variety of ways](#) ...

- **Inform** members on current research, trends and tools in the field
- **Teach and educate** through a variety of in-person, on-line, and virtual professional development opportunities
- **Enable networking and collaboration**
- **Advocate** for the diabetes educator and the profession
- **Share** expert opinions
- **Conduct** research and **develop** an evidence base
- **Forge alliances** to further our mutual cause



MY AADE NETWORK allows members to connect locally, across their state and around the world ... day and night!

Have you logged in yet?

How We Serve

To keep members and volunteers in touch, we provide

- [The Diabetes Educator](#) – a bi-monthly Journal
- [AADE in Practice](#) – quarterly printed newsletter
- [eFYI](#) – monthly electronic newsletter
- [AADE Blog](#) – regular posts written and commented on by members
- [MY AADE NETWORK](#)
- Social Networking Sites – reaching outside our organization
 - [Facebook](#)
 - [Twitter](#) (@AADEdiabetes)
 - [LinkedIn](#)
 - [YouTube Channel](#) – Present Diabetes Channel

How We Serve

Through the [AADE Education and Research Foundation](#), we work to support a variety of research and educational opportunities for AADE members, and to continue to expand diabetes education.

It is supported through grants and contributions. **It offers grants, scholarships and recognition awards.**

How We Serve

AADE maintains an [awards and scholarship program](#) to recognize members for outstanding contributions to diabetes education or service to the association.

Currently the following awards and grants are available:

- Allene Von Son Distinguished Service Award
- Living Legend Award
- Diabetes Educator of the Year
- Advocacy Award
- Rising Star Award
- Innovation in Practice and Innovative Use of Media & Technology Grant
- Sigma Theta Tau International Grant
- Continuous Quality Improvement Grants
- Research Grants

How We Serve – YOU!

As a volunteer, we want you to have a successful experience. Throughout the year, we come to you with opportunities to learn and grow. Be sure to tap us, the resources and the opportunities.

- **Leadership Development Audios** – three virtual training programs, offering CEUs, to hone skills for leadership in AADE and your career
- **Annual Leadership Conference** – 2-day in-person conference, offering CEUs, to focus on volunteer leadership skills
- **AADE Annual Meeting Sessions** – at the annual meeting, we host training programs catered to volunteer leaders
- **Quarterly Updates** – Calls to give leaders updates on AADE policies, procedures and programs and to take your questions
- **Volunteer Resource Library** – housed on MY AADE NETWORK, this resources offers templates, archived training programs, and discussion forums to help you be successful
- **Volunteer Leader Newsletter** – monthly e-letter providing tips, ideas and updates
- **AADE Staff** – Call or email us: 800-338-3633 or mynetwork@aadenet.org

Facts* that tell the AADE Story

- AADE was founded on December 6, 1973 in Chicago.
- The first annual meeting was held in 1974 with participation of 272 diabetes educators from 38 states and Canada.
- Today, we have close to 13,000 members: 58% RNs, 25% RDs, 8% Pharmacists and 9% allied-health professionals and students.
- We hold more than 100 education events each year through AADE national and our member affiliate groups.
- Our scope of practice was established in 1999.
- AADE7™ Self-Care Behaviors launched in 2005.
- AADE published Guidelines for Practice of DSME and a companion document outlining Competencies in 2009
- In 2009 AADE become one of the two organizations that accredits diabetes education programs. Today there are more than [350 accredited programs and 1102 sites](#).
- Value of Diabetes Educator research completed and published in 2010
- Reimbursement for DSMT G-codes increases in the 2011 thanks to AADE advocacy efforts
- Diabetes Educator Licensure is on the horizon; AADE takes the lead in 2011.

Contact your Volunteer Services staff if you have additional questions:

mynetwork@aadenet.org